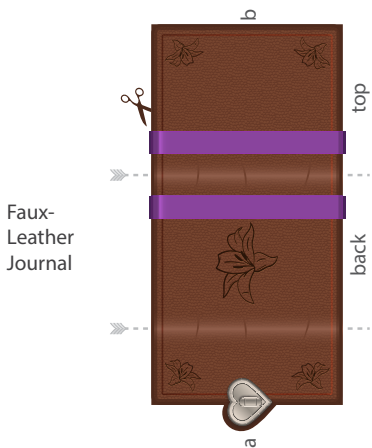
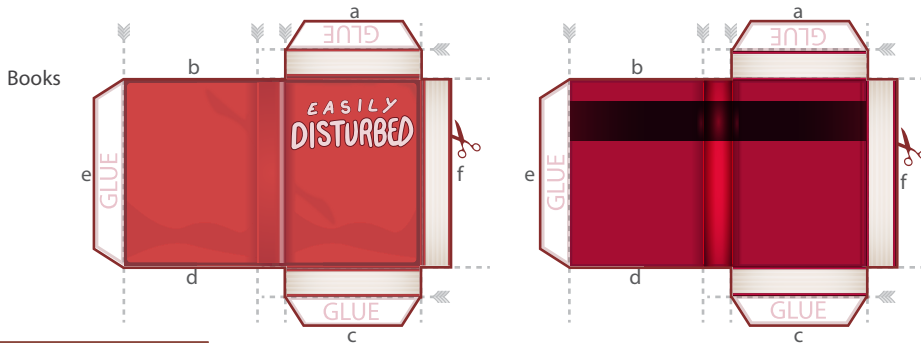


Solid Lines Mean Cut ✂
 Dotted Lines Mean Fold ➡-----
 G = GLUE



Festival Banner

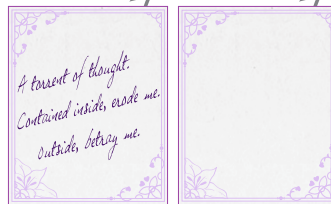


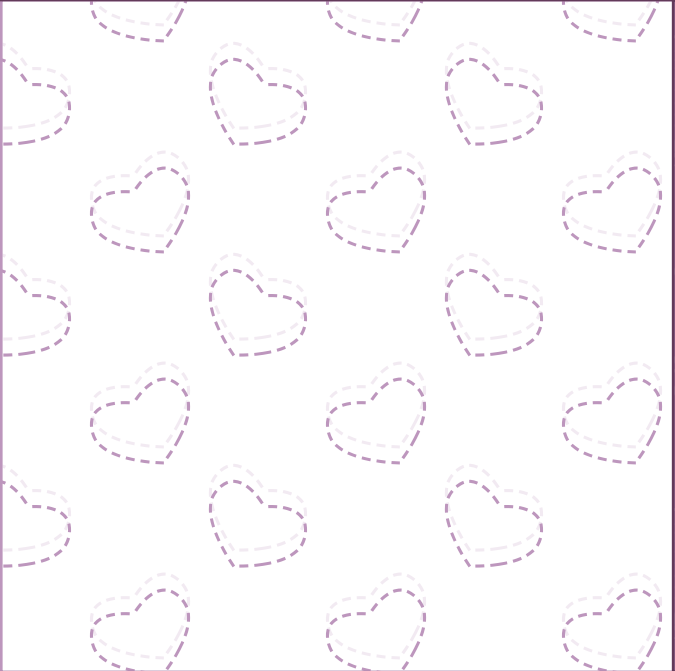
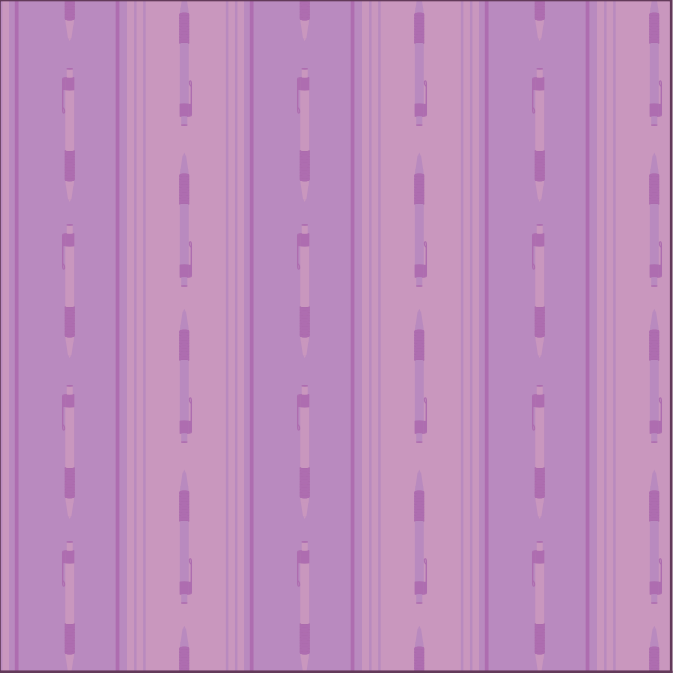
Bookshelf

Composition Journal

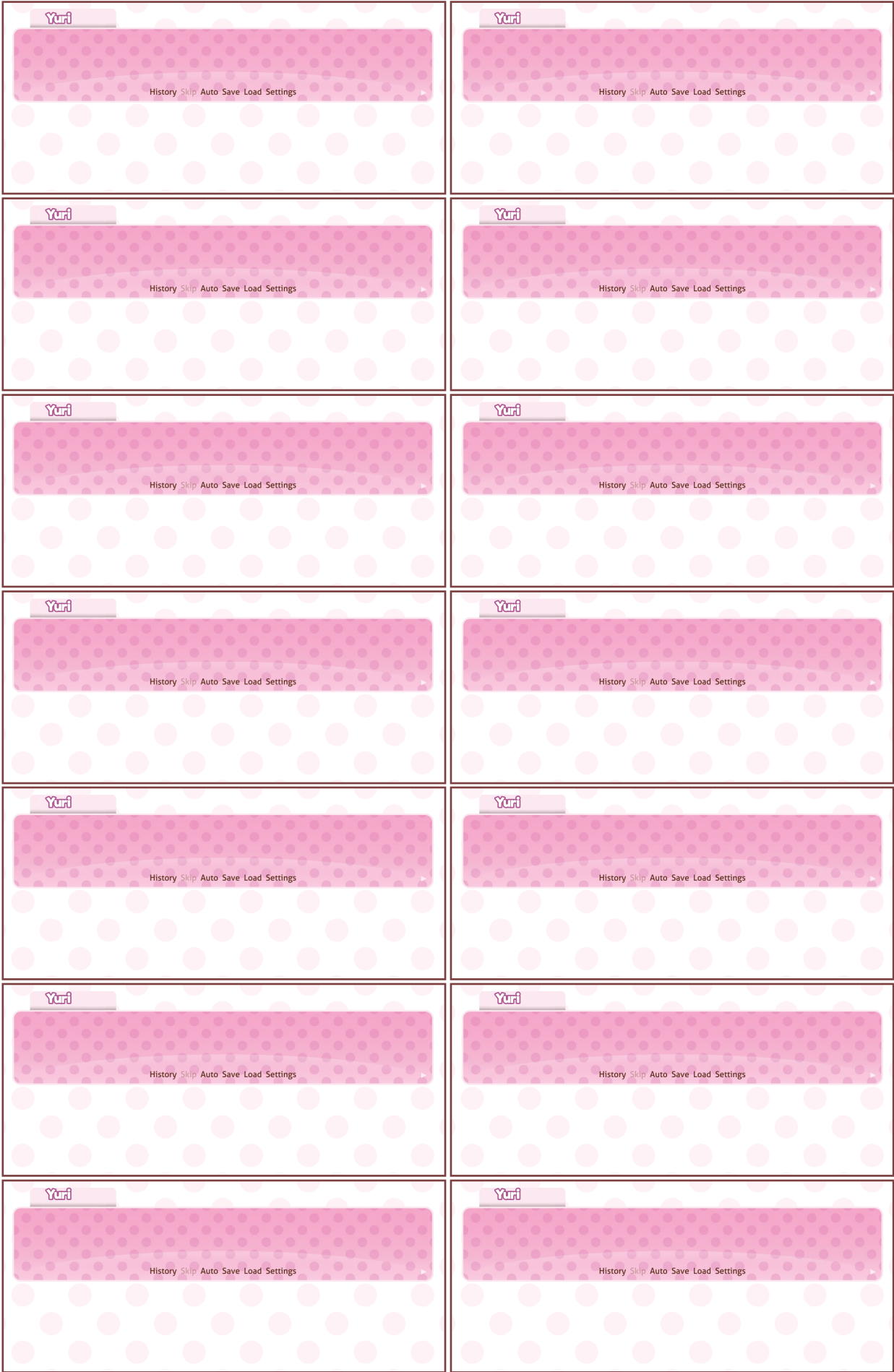


Poem Stationery









Instructions

General Note: For best results, use thicker paper when constructing items in this DIY Pack. The accessories in the example photo were printed on 32lb printer paper.

During the cutting stages of many of these accessories, certain reference lines or labels may be removed. For clarity throughout the assembly process, we recommend keeping a digital copy of the artwork and instructions available for reference.

Bookshelf

- **Cut:** Carefully cut out the full bookshelf. Cut only along the bold outermost solid line.
- **Fold:** Use the dotted lines as guides for where to fold. As you fold, keep the (unlabeled) artwork facing outwards.
- **Glue:** Apply a thin layer of glue along the long tab marked 'GLUE' on Side A. Gently press the tab onto the backside of Side B to glue the two sides together, forming a box shape.
- **Bottom:** Fold the tabs along the bottom of the bookshelf marked "FOLD IN" inwards, towards the inside of the box shape you have created.

Repeat this step with the larger tab marked "FOLD IN OR GLUE". Then tuck these larger tabs inside of the box.

Optional: Glue this tab for extra support.

- **Top:** (You will now repeat the process you have just completed for the Bottom.) Fold the tabs along the top of the bookshelf marked "FOLD IN" inwards, towards the inside of the box shape you have created.

Repeat this step with the larger tab marked "FOLD IN OR GLUE". Then tuck these larger tabs inside of the box.

Optional: Glue this tab for extra support.

- **Finish:** This should create a box shaped structure that appears like a shelf and display case.

Books

Note: These directions can be used to construct all of the "book" accessories in this DIY pack.

- **Cut:** Carefully cut out the book, cutting only along the bold outermost solid line, keeping all tabs intact.
- **Fold:** Fold each tab and side along the dotted lines, keeping the artwork facing outward.
- **Glue:** Apply a thin layer of glue to side tab (a) marked "GLUE" and gently press the glued side of tab (a) onto the underside of side (b). Apply a thin layer of glue to tab (c) and gently press it onto the underside of side (d).
- **Finish:** Apply a thin layer of glue to tab (e). Fold tab (f) over tab (e) and press gently to glue these two sides together and complete the book. Allow to dry.

Festival Banner

- **Cut:** Cut out the Banner along the bold outermost solid line.
 - **Decorate:** What inspirational quote do you think Yuri wrote on the banner she and MC made for the Festival? Get creative and bring it to life with your own words and decorations!
 - **Optional:** If desired, you may consider using an image-editing software such as Photoshop to add text, or digital art to your banner before printing.
-

Faux-Leather Journal

- **Cut:** Carefully cut out the Faux-Leather Journal piece along the bold outermost solid line.
 - **Fold:** Crease along the dotted lines to form the cover shape.
 - **Finish:** The heart clasp (a) should rest at the center of the top of the book.
 - **Optional:** You may consider gluing in some extra copies of the stationery sheets into the journal to give the book dimension.
 - **Optional:** If desired, you may glue the heart clasp onto the top of the book to hold its shape
-

Poem Stationery

- **Cut:** Carefully cut out the sheets of stationery along the bold outermost solid line.
 - **Use:** Write directly on the printed stationery paper to create your own poems, notes, letters, and more!
 - **Optional:** If desired, you may consider using an image-editing software such as Photoshop to add text, or digital art to your blank stationery before printing.
-

Composition Journal

- **Cut:** Carefully cut out the Faux-Leather Journal piece along the bold outermost solid line.
- **Fold:** Crease along the dotted lines to form the cover shape.
 - **Optional:** If desired, you may glue the heart clasp onto the top of the book to hold its shape.